

POLYFLOR™
COVERING THE WORLD

Polysafe™ Apex

Standing the Toughest of Tests

SAFETY FLOORING



Polysafe™ Apex

Welcome to Polysafe Apex, the safety flooring heavyweight designed to stand the toughest of tests in those extreme areas. In food processing, production and kitchen environments, where there is plenty of movement over the floor, a high number of meals served and food processed daily plus frequent spillages, the specified flooring needs to last the pace.

To meet these demands, super tough Polysafe Apex comes complete with specially enhanced slip resistant properties, to ensure the optimum in underfoot safety and added protection to employees. In intensive commercial and industrial environments where prolonged activity means workers are regularly rushing around, Apex provides the required underfoot comfort which allows users to feel at ease and confident on their feet.

For long term slip resistance year in, year out, look no further than Polysafe Apex, a sheet vinyl flooring offering the pinnacle of performance to meet an employer's duty of care requirements.

where is it used?

Ideally suited to areas of intensive food production and processing where there are risks of spillages which are more viscous in nature, Apex is specifically designed to minimise slip risk whilst withstanding the daily rigours of those tough and enduring industrial environments. Also suited to busy kitchen areas whether gourmet, commercial or fast food environments where over 100 meals are served daily and frequent frying is undertaken, Apex maintains slip resistance levels in spite of regular contamination from oil and grease.



sustainable wet slip resistance

Safety flooring with sustainable wet slip resistance is the cornerstone of all Polysafe flooring manufactured by Polyflor. With increased levels of silicon carbide, coloured quartz particles and natural recycled aggregate in the vinyl, the slip resistance of Polysafe Apex is assured for the guaranteed life of the product. Demonstrating that these safety particles offer durable, long term performance, Apex fully meets requirements of the 50,000 cycles abrasion test within the European Safety Flooring Standard EN 13845. This test involves grit being continuously applied to show the true depth of aggregate in the product.



Due to this high concentration of safety particles, Apex achieves a result of 45+ on the Pendulum Wet Test (4S Rubber/Slider 96), meeting the category of low slip potential and ensuring Health and Safety Executive (HSE) Compliance. The Pendulum Test is HSE's recommended method of measuring slip resistance as it can be monitored over the lifetime of the floor to give live in-situ results after installation and maintenance has been undertaken. Add in Apex's result of 70 microns + using a surface roughness meter - the complementary slip test method recommended to be used in conjunction with the Pendulum and all in the specification chain have complete piece of mind.

As well as providing sustainable wet slip resistance, Apex also achieves an ex-factory R12 rating to both DIN 51130 and AS/NZS 4586 standards.



how does Apex's slip resistance work?

Polysafe Apex's key principle is function over form and the need to perform in tough conditions. The range is designed to ensure the underfoot protection of workers operating in busy environments by providing sustained friction between foot and floor, despite regular contamination.

Apex's unique surface roughness, formed through a concentrated level of safety particles in the vinyl and a specially engineered emboss is designed to provide top level sustainable slip resistance. In intensive food production and commercial kitchen areas, the regular spillage of cooking oil, grease and wet contaminants creates the potential for the formation of a squeeze film - heavily compressed fluid trapped between shoe and floor which prevents solid-to-solid contact and would pose a slip risk if incorrect flooring is specified. The more viscous the contaminant, the higher level of surface roughness is required for the flooring to penetrate this squeeze film and achieve continued friction between foot and floor.

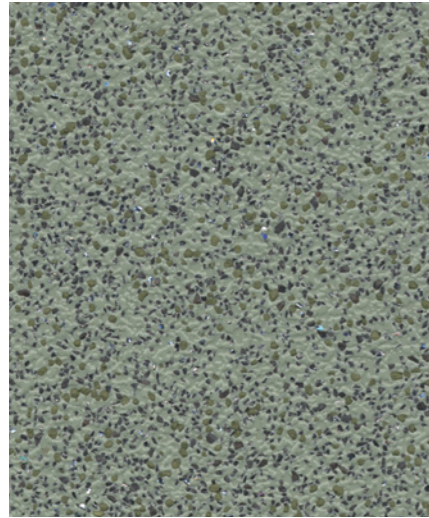
Choosing Apex, with a surface roughness of 70 microns and above, ensures the thicker margarine, olive oil and cooking stock spillages can be accommodated, breaking through the squeeze film and maintaining slip resistance.

maintenance

With an emboss that facilitates straightforward maintenance, Polysafe Apex can be cleaned easily with a traditional mop and bucket system using neutral or alkaline cleanser diluted as required. Approved maintenance product sheets are available to download via www.polyflor.com. It is also recommended that a rotary machine scrubber is used as part of a regular maintenance programme.

Available in a flexible sheet format to enable ease of coving and working around drainage points, Apex can be welded at the seams with a colour co-ordinated weld rod to create an impermeable finish and provide improved hygiene protection. This fully sealed solution avoids the potential for cracked grout lines and subsequent dirt ingress.

Polysafe Apex



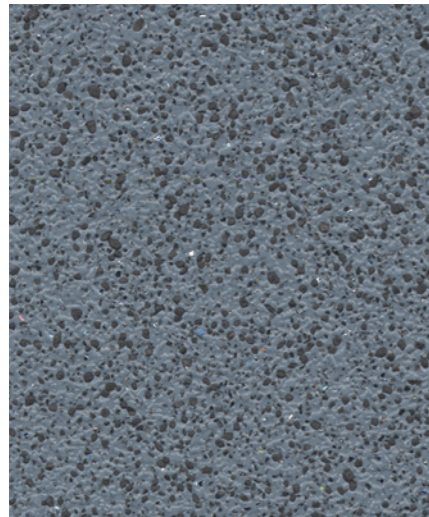
Green Quartz 4201
w/r 4350
NCS S 5005-G50Y
LRV 24.0



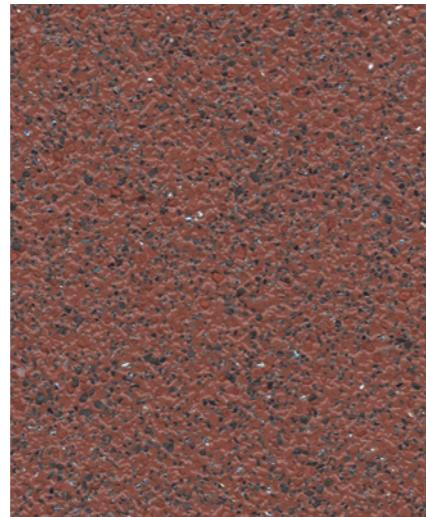
Siltstone 4205
w/r 4600
NCS S 5005-Y80R
LRV 22.6



Chromite 4202
w/r 4610
NCS S 6500-N
LRV 15.1



Breccia 4204
w/r 4670
NCS S 5010-R90B
LRV 17.8



Red Ochre 4206
w/r 4206
NCS S 5030-Y80R
LRV 12.8



Biotite 4203
w/r 8640
NCS S 8000-N
LRV 6.1

The closest perceived NCS - Natural Colour System references are quoted for your convenience. For more information see www.ncscolour.com
Light Reflectance Values (LRV) - all colours are tested in accordance with BS8300:2009.

w/r = weld rod

find out more

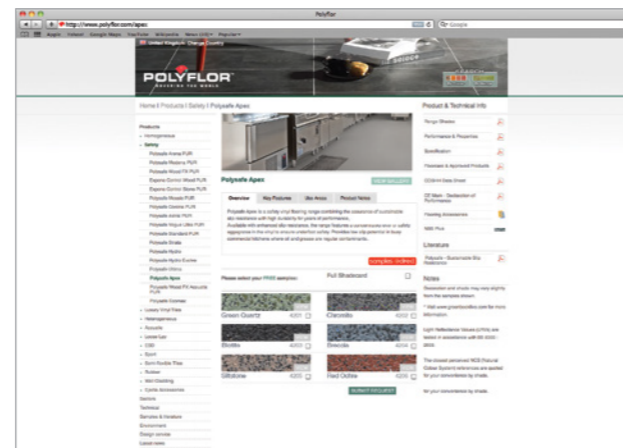
www.polyflor.com/apex

The Polyflor website is the main resource centre for Polysafe Apex product information.

View technical information or order free samples online

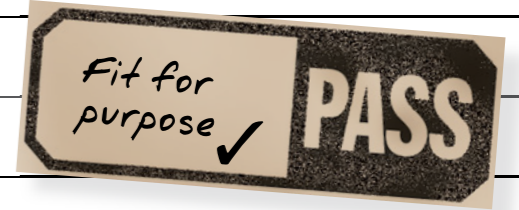
samples direct >>>> +44 (0)161 767 2551

Obtain free Apex product samples, shadecards and product literature - contact the Polyflor Samples Direct Hotline on +44(0)161 767 2551



technical specification

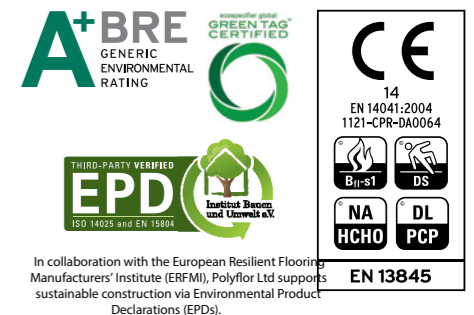
Gauge		2.5 mm
Roll Size		2m x 20m = 40m ²
Product Weight		3150g/m ²
General Performance		EN 13845
Use Area Classification		23, 34, 43
Reaction to Fire		EN 13501-1 Class Bfl-S1
Enhanced Slip		Sustainable wet slip resistance* EN 13845 ESf AS/NZS 4586 R12 DIN 51130 R12 RRL Pendulum Test ≥45 (wet test - 4S Rubber/Slider 96) Surface roughness Rz ≥70µm (Typical result) The slip resistance is assured throughout the guaranteed life of the product, with strict adherence to HSE Guidelines
Abrasion Resistance		EN 13845 50,000 cycles EN 649 Group T
VOC Emissions		AgBB/DiBT Pass GBCA/NZGBC Green Star IEQ-VOC: Compliant
Environmentally Preferable Flooring		Polysafe Apex achieves BRE Global Environmental Generic A+ rating in major use areas such as education and healthcare and is GreenTag LCA Rate certified with GreenRate level A. Generic Environmental Product Declaration EN 15804 EPD is available on request. It is 100% recyclable and contains recycled material. Recyclable via the Recofloor scheme Visit www.polyflor.com/environment
Resistance to Chemicals		Good resistance to dilute acids and alkalis. Chemical resistance charts by shade are available on request
Hygiene		All Polyflor commercial sheet vinyl ranges provide a continuous, impervious and hygienic flooring solution which can be confidently cleaned in accordance with recommended maintenance procedures and approved maintenance products. The implementation of an effective cleaning regime is the most important defence against infection
Electrical Behaviour (body voltage)		EN 1815 This product does not accumulate static charges above 2kV and is classified as 'antistatic'. For specialist applications where there is a requirement to dissipate the electrostatic charge, see the Polyflor ESD product ranges



Polyflor Customer Technical Services Division

For advice on all technical product details for Apex, including handling and installation, suitable adhesives, maintenance, applications and chemical resistance, consult Polyflor Customer Technical Services on +44(0)161 767 1912 or e-mail tech@polyflor.com

*For clarification regarding slip resistance, consult Polyflor Customer Technical Services.





POLYFLOR™ INTERNATIONAL

Australia

Polyflor Australia
Tel: +61 3 9215 4400
Tel: 1800 777 425
E-mail: sales@polyflor.com.au

Canada

Polyflor Canada Inc.
Tel: +1 905 364 3000
E-mail: sales@polyflor.ca

China

Polyflor Hong Kong
Tel: +(852) 2865 0101
E-mail: anthonylam@polyflor.com.hk

France

James Halstead France SAS
Tel: +33 (0) 8 20 20 32 11
E-mail: info@jhfrance.fr

Germany

objectflor Art und Design Belags GmbH
Tel: +49 (0) 2236 966 330
E-mail: info@objectflor.de

Ireland

Polyflor Ireland
Tel: +353 (1) 864 9304
E-mail: salesireland@polyflor.com

New Zealand

Polyflor New Zealand
Tel: +64 9 269 1111
Tel: 0800 765 935
E-mail: sales@polyflor.co.nz

Norway

Polyflor Nordic
Tel: +47 23 00 84 00
E-mail: firmapost@polyflor.no

Poland

Polflor Sp. Z o.o.
Tel: +48 (0) 61 820 3155
E-mail: polyflor@polflor.com.pl

Russia

Polyflor Contract Ltd
Tel: +7 (812) 332 42 02
E-mail: info@polyflor.ru

South Africa

Poly Sales Africa (Pty.) Ltd
Tel: +27 11 609 3500
E-mail: info@polyflor.co.za

Sweden

FalckDesign AB
Tel: +46 (0) 300 15820
E-mail: info@falckdesign.com

United Arab Emirates

Polyflor Middle East
Tel: +971 4 349 1078
E-mail: espm@eim.ae

www.polyflor.com



POLYFLOR™ HEAD OFFICE

POLYFLOR LTD. PO BOX 3 RADCLIFFE NEW ROAD WHITEFIELD MANCHESTER M45 7NR UK

UK SALES DIRECT: +44 (0)161 767 1122

UK SAMPLE REQUESTS: +44 (0)161 767 2551

EXPORT SALES DIRECT: +44 (0)161 767 1913

UK FAX: +44 (0)161 767 1128

EXPORT FAX: +44 (0)161 767 1166

TECHNICAL SUPPORT: +44 (0)161 767 1912

RECEPTION: +44 (0)161 767 1111

E-MAIL: INFO@POLYFLOR.COM

WEBSITE: WWW.POLYFLOR.COM